

**OTHER GUIDES
IN THE SERIES:**

Awnings & Canopies

Commercial Signage

Dormers & Roofline Additions

Garages & Outbuildings

Murals & Wall Graphics

New Additions

Porches & Decks

Residential Windows



**CITY OF ASTORIA
COMMUNITY DEVELOPMENT DEPT.**

1095 Duane St.

Astoria, OR 97103

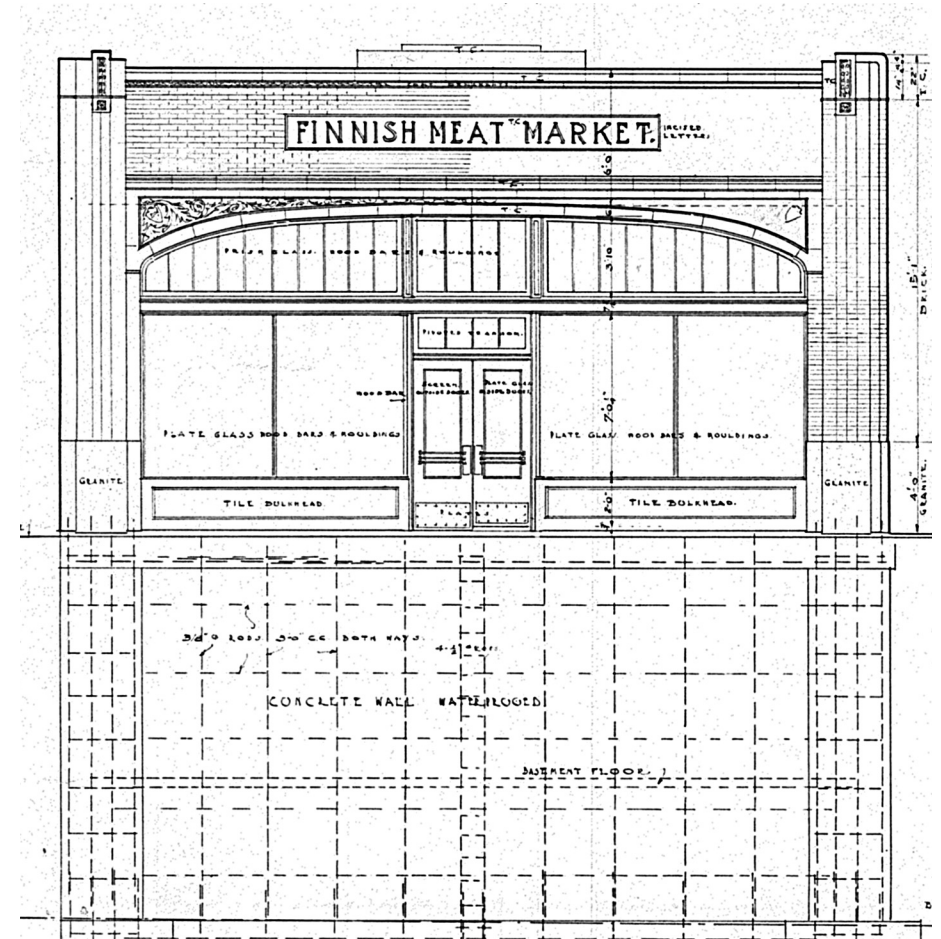
P: 503.338.5183

Email: planning@astoria.gov

This publication has been funded with the assistance of a matching grant-in-aid from the Oregon State Historic Preservation Office and the National Park Service. Regulations of the U.S. Department of the Interior strictly prohibit unlawful discrimination on the basis of race, color, national origin, age or handicap. Any person who believes he or she has been discriminated against in any program, activity, or facility operated by a recipient of Federal assistance should write to: Office of Equal Opportunity, National Park Service, 1849 C Street, NW, Washington D.C. 20240.

INTRODUCTION TO

**HISTORIC
ASTORIA**



CITY of ASTORIA
HISTORIC LANDMARKS COMMISSION

ASTORIA HISTORY

South of the Columbia River on the Pacific Coast, the area that would be Astoria was explored in 1792 by Captain Robert Gray and in 1805-06 by the Lewis & Clark Expedition. Permanent settlement began when Fort Astoria was established in 1811 by John Jacob Astor's Pacific Fur Company. Beginning in the 1840s, Astoria grew from a small settlement into a bustling port. Salmon canneries, forestry and shipping industries brought significant economic growth, and immigrants arrived from Finland, Scandinavia and China. A significant number of Victorian houses were constructed during that period and still remain. Many are local landmarks, or are on the National Register of Historic Places.

HISTORIC DESIGNATION

A movement to save Astoria's historic structures began when demolition of older buildings was promoted as "urban renewal." Newcomers saw the value of these structures and started revitalizing worn-out neighborhoods. In 1978, a Historic Building and Sites Commission (now the Historic Landmarks Commission) was appointed by the mayor, and in 1985, the City of Astoria embarked on inventorying its most historic neighborhoods. Over 1,200 buildings were inventoried, resulting in the designation of nearly 700 local landmarks and three National Register Historic Districts.

The Historic Landmarks Commission reviews all new designations. Designation can occur for an individual property, or through the comprehensive neighborhood historic inventory process. Only buildings classified as "primary" or "secondary" within a district are considered historic, and require review by the Historic Landmarks Commission if alterations are proposed. Buildings individually listed as local landmarks, National Register or National Landmarks also require review. Both National Register and National Landmark buildings begin the designation process locally, but may be reviewed at the state and federal levels if alterations are proposed.

HISTORIC LANDMARKS COMMISSION REVIEW

The Historic Landmarks Commission reviews exterior alterations of historic buildings. Alterations include attaching decks or porches, replacing siding with a different type of material, replacing windows with different materials or styles, removing historic ornamentation, changing rooflines, or constructing an addition. Certain exterior alterations may be approved administratively.

The Historic Landmarks Commission also reviews new construction to ensure compatibility in scale, style, height, materials, architectural detail, and orientation with adjacent historic buildings and the neighborhood.

The City does not review interior alterations, routine maintenance, or exterior paint colors. Property owners are not required to paint buildings in historic colors, but the City will assist the owner in selecting colors if requested.

HISTORIC LANDMARKS COMMISSION

Astoria's Historic Landmarks Commission is a citizen's committee appointed by the mayor. Members must show an interest in or knowledge of historic preservation, and serve a four year term. Meetings are held each month.

DESIGN REVIEW AND ASSISTANCE

Applications for review by the Historic Landmarks Commission are available at City Hall, and are due by the 20th of the month prior to hearing. Hearings will be scheduled for complete applications only. Review by the Commission is considered a land use decision subject to land use regulations of the State of Oregon.

The City of Astoria offers property owners limited design consultation by trained staff. This may include review of the history and stylistic characteristics of the building, suggestions on how to blend alterations with the building's character, and advice on how to navigate an application through the Historic Landmarks Commission.

The City offers a storefront facade improvement grant to some commercial buildings in the Uniontown area, regardless of historic designation. Financial incentives may also be available through the state and federal governments for buildings listed on the National Register of Historic Places or within a National Register Historic District.

ADDITIONAL INFORMATION

- Clatsop County Heritage Museum www.clatsophistoricalsociety.org
- The National Register of Historic Places www.cr.nps.gov
- National Trust for Historic Preservation..... www.nationaltrust.org
- Old House Journal www.oldhousejournal.com
- The Oregon Heritage Commission www.oregonheritage.org
- State Historic Preservation Office www.oregon.gov